



Dade Chapter

TILLANDSIA

Newsletter of the Dade Chapter of the Florida Native Plant Society, Inc.
- For Miami-Dade County and the Florida Keys -

JUNE 2019

MONTHLY MEETING

Tuesday, June 25, 2019, 7:30 p.m.

Pinecrest Gardens, 11000 SW 57 Ave. (Red Road), Miami

Free and open to the public

Refreshments begin at 7:15 p.m., merchandise sales before and after the program. The raffle follows the program.

Contributions of **raffle items** (native plants, non-plant items such as books, etc.) and **refreshments** are greatly appreciated.

Please label your raffle plant donations.

“The Imperiled Flora and Fauna of the Pine Rocklands of Zoo Miami”

- Frank Ridgley DVM, Zoo Conservation and Veterinary Services Manager, Zoo Miami

When people hear the word “zoo” they often don’t think about plant conservation, ecosystem restoration, or even local endemic species programs. Zoo Miami has a global reach with its conservation programs but also shows leadership and collaboration on many different types of programs and initiatives for all of the imperiled species that occupy the pine rockland ecosystem surrounding the zoo. Learn about what this Miami-Dade County public park does to help preserve biodiversity and conduct research to fill in the gaps needed for proper conservation planning into the future.

In 2007, Dr. Ridgley accepted a position at Zoo Miami as an Associate Veterinarian after being the Senior Veterinarian for the Buffalo Zoo for many years. In 2011, Dr. Ridgley shifted his focus to field conservation and research efforts and became the Director of Conservation and Research. He is currently a



research associate and graduate faculty at Florida International University, on the Steering Committee of the Everglades CISMA, on the Steering

Committee of the Florida Imperiled Butterfly Working Group, on the Conservation Committee of the Florida Association of Zoos and Aquariums, and a member of the Florida Bonneted Bat Working Group.

Calendar

June

8 (Sat): Chapter workday, Everglades Nat Park, 9am-noon

25 (Tue.): DCFNPS meeting, Pinecrest Gardens. **7:30 pm**

29 (Sat.): Field trip – Space limited, registration required!

July

20 (Sat): Annual evening yard visit & potluck social

(no meeting at Pinecrest Gardens)

Other events of interest

June 18: Dade Native Plant Workshop – 5 p.m.

June–Aug.: Miami-Dade Parks Planning Workshops.

June–Aug.: Bleachwatch Observer training (for coral reefs)

June–July: City of Miami Parks Volunteer workdays

July 20: There is no formal July meeting - instead we gather for a Saturday evening potluck and yard visit. Save the date to enjoy an eclectic mix of plants and decorative items in the small, fun garden of Joey Basna. Details next month.

FIELD TRIP: Zoo Miami conservation areas

Saturday, June 29, 2019

► **Space is limited, registration required -- register now!** ◀

Contact Patty (pharespl@gmail.com, 305-255-6404 h). Include name(s) and phone number(s).

Preference is given to current Dade Chapter FNPS members through June 26. (You may register a guest to be added to the wait-list.) After that, guests of members will added from the wait-list as space allows. (You will be contacted.)

If you have been contemplating joining, now is great time!

Zoo Miami pine rocklands & butterfly research laboratory.

We will visit several of Zoo Miami’s pine rockland restoration sites, walk a few of the firebreaks to see some the unique endemic species, and visit the 1940’s era military munitions bunker that has been converted to a green powered imperiled butterfly research laboratory.

• **Bring/wear:** Sun protection, water.

• **Leader:** **Dr. Frank Ridgley**, our June speaker

• **Difficulty:** Easy, walking on unpaved firebreaks. A cart will take us between sites since they are some distance apart (thus the space limitation).

Time, address and directions are in the newsletter mailed to members. Please join to enjoy all the activities of the chapter!

FOLLOWUP ON "WEEDOLOGY"

At our May, 2019, DCFNPS meeting on "Weedology", Janine Griffiths offered a handout outlining her program, with helpful links and information. For instance:

Weed Killer Recipe:

- 1 gallon of Vinegar (higher % = quicker results)
- 1 tbsp dish washing soap
- 2 cups Epsom salts

To have this handout emailed to you, please contact Jeanne Rothchild (jmrothchild9446@gmail.com).

During a lively discussion, Karen Picciano offered information about "All Natural Feed & Weed" which contains a pre-emergent herbicide of corn gluten meal. See

- www.dixondalefarms.com/product/all-natural-weed-feed-4/fertilizers.
- en.wikipedia.org/wiki/Corn_gluten_meal
- learn.eartheasy.com/articles/corn-gluten-meal/
- www.gardensalive.com/product/corn-gluten-meal (though they may not carry it anymore).

Karen had excellent results in her potato garden. She only spread it on the potato rows and had almost no weeds there, even weeks after pulling the potatoes. Between rows Spanish needles (*Bidens alba*) grew happily, though she hand pulled some. You might translate this experience to weed-prone areas in your native plant yard, e.g. paths and borders.

DADE CHAPTER and FNPS NEWS

Welcome new member! Marian Whitcomb

Annual meeting.

At the Annual Meeting of the Dade Chapter FNPS on May 28, 2019, the proposed slate was approved unanimously, all for 2-year terms:

Secretary: Gita Ramsay

Treasurer: Susan Walcutt

Directors-at-large: Janeen Feiger, Jennifer Stine, Steve Woodmansee

Continuing their two-year terms are Kurt Birchenough (president), Brian Diaz (vice-president), and Amy Leonard, Jeanne Rothchild and Ian Wogan (directors-at-large).

All but Steve Woodmansee were on the 2018-2019 board.

Heartfelt thanks to Vivian Waddell who retired from the board after serving for 10 years! Vivian played a key role in Native Plant Day every year as well as other needs.

Steve Woodmansee is returning to the board after an absence. He is a Miami native who has worked as a botanist for more than 20 years, including at Fairchild Tropical Botanic Garden, The Institute for Regional Conservation and teaching at Miami Dade College. He owns Pro Native Consulting, providing environmental consulting services and growing and selling unusual native plants. He has served as president of both the FNPS and the Dade Chapter and is chair of the Dade Native Plant Workshop. He has written for numerous journals and other resources, led many field trips and presented programs. His expertise is in native plant identification, rare and exotic plant research, native plant horticulture, institution building, and award winning native plant community restoration.

The Palmetto – Volume 35: Number 1 > 2019. The latest issue of the FNPS magazine **should have arrived in your mailbox in mid-May, but only if you were a current member at the time!**

If you did not receive it but believe you should have, please contact FNPS (see contacts box) to verify your address.

If you are ready to recycle yours, you can bring to an upcoming meeting to offer to guests or new members. (Put a note "Free" on the front cover.)

FNPS 2019 ANNUAL CONFERENCE NEWS

A small contingent of Dade Chapter members attended the conference in Crystal River in May. "You're definitely not in Miami" experiences ranged from seeing a dead bear instead of other cars on the road, to seeing very tall trees all around.

Listen and view some presentations and field trips at fnpsblog.blogspot.com/2019/05/conference-recordings.html

Below are awards with some connection to the Dade Chapter or Miami-Dade. Other awardees in these and other categories will be presented in future FNPS publications.

• Research Grant

"Effects of soil microbiome on growth and dispersal of a native plant (*Croton linearis*) in a fragmented landscape."

- Kasey Kiesewetter (University of Miami)

• Conservation Grant

"Habitat Enhancement and Restoration of Clasping Warea (*Warea amplexifolia*)" - Putnam Land Conservancy, (sponsored by the Marion Big Scrub Chapter)

This award was made possible in part by the Dade Chapter donations in honor of Don and Joyce Gann, along with donations from the Tarflower, Sea Rocket, and Nature Coast Chapters, and Annie Schmidt.

• Dan Austin Award for Ethnobotany

"The adoption of Florida natives as insectary plants to promote beneficial insects in agricultural communities via trophic resource enhancement" - Andrea Salas Primoli, Plant Ecology (Koptur) Lab, FIU.

As agricultural expansion increases, areas become isolated and difficult environments to maintain insect-mediated interactions, affecting crop and native vegetation productivity, and farmers' livelihood. Natives in agroecosystems, especially those in ecosystems affected by agricultural practices, should be explored; a recent review suggests native perennial plants bearing extrafloral nectaries hold great potential as insectary plants, promoting long-term restoration of local biodiversity and habitat permanency for beneficial insects.

Cultivating native plants in agroecosystems, this integrated study couples natural and human systems to assess how changes in plant-provided resources affect insect-mediated ecosystem services and attributes affecting farmers' decision to adopt native insectary plants. Farmers will be trained on native ornamentals cultivation as alternative income source, arthropods identification, and emergence dates to track progression and reduce external input that affect their dispersal and development. Our long-term goal is to increase the range of native vegetation, while encouraging sustainable food production and conservation outside protected areas.

● **Mentor Award to Roger Hammer**, a member of the Dade Chapter, but he belongs to the whole state.

The nomination reads:

We nominate Roger Hammer for the ultimate award that the Florida Native Plant Society (Society) can give a member. Roger has been a dedicated member of the Society since 1995. He has always shared and continues to share, his time and his vast knowledge of Florida's native plants, plant communities, and our natural lands with everyone he meets (both in person and online). He promotes the Society every chance he gets and we are unbelievably fortunate to count him as a member and a friend.

Roger is a "fixture" on the environmental conference circuit and has generously shared his knowledge and experience at countless Society conferences, field trips and Society chapter meetings across our state.

Roger has written numerous books and guides on Florida's native plants. Anyone, regardless of their plant knowledge, can enjoy and use his books to identify the amazing diversity of native plants that inhabit our state. In addition to his skill as an author, Roger is also an environmental scientist, naturalist, photographer, teacher, and one of the most engaging and humorous people we have ever met.

The hallmark of any great teacher is their ability to share their knowledge with everyone – from novice to expert – while enlightening and entertaining the entire audience. Roger accomplishes this daily, whether in person or online, in numerous forums where people of every possible skill level ask for help identifying plants, plant communities, or just asking for advice. He is a mentor in every sense of the word and we are fortunate to have him in our Society.

Thank you Roger!

Sincerely,

Juliet Rynear, FNPS Executive Director

Marlene Rodak, FNPS Conference Chair and Board Member,

Coccoloba Chapter Vice President and Board Member

● **Silver Palmetto Award**

Patty Phares (and several from other chapters) - This award is given to FNPS members chosen by the FNPS President. They typically go to those who make major contribution to the functioning of the Society. (That's all I know! – Editor)



The 40th Annual Conference will be May 21-24, 2020 in Jacksonville, hosted by the Ixia Chapter.

WHAT OUR FRIENDS ARE DOING

More opportunities to learn about, enjoy and help native plants and natural areas.

Dade Native Plant Workshop: MDC Kendall Campus Landscape Technology Center, third Tuesdays, 5 pm. nativeplantworkshop.ning.com/ or contact Steve Woodmansee at steve@pronative.com. Bring at least three cuttings or pots, which need not pertain to the topic. **All levels are welcome!**

Note: we're switching back to the ning.com website.

June 18: Coastal Strand Plants. Coastal Strand is a fire climax upland plant community located behind the beach dune. IRC

has a [list of plants](#) found in this community (regionalconservation.org > Online Resources > Floristic Inventory of South Florida > Plants by Habitat > Coastal Strand)

Miami-Dade Parks Planning Workshops. Help create better parks and programs by participating in planning workshops held **throughout Miami-Dade in June and July (later workshops through August will be added soon)**. Bring your family, friends and ideas to build more personalized parks and programs. Registration is recommended, but not required.

Website link to all public workshops:

www8.miamidade.gov/global/news-item.page?Mduid_news=news1557328015919622

Contact Stephanie Cornejo (cornejo@miamidade.gov) if you have questions.

Help protect our reefs. Learn about coral bleaching and disease and how you can help protect reefs by becoming a trained **Bleachwatch Observer**. Free training classes for certified divers June -August in SE Fla (register ASAP).

<http://www.floridareef.org/bleachwatch.html>

City of Miami Parks Volunteer Calendar. Events at Alice Wainwright Park (June 22) or Virginia Key Beach North Point Park (July 6, 20). Register through Eventbrite or contact Gloria Antia (gantia@miamigov.com, 305-416-1317).

Support the Dade Chapter FNPS by using Amazon Smile!

Register for Amazon Smile and then always start at smile.amazon.com. Amazon will donate 0.5% of the price of your eligible purchases. *Every little bit adds up!*

The following article is reprinted with permission from "Connections", the (former) newsletter of the Connect To Protect Network at Fairchild Tropical Botanic Garden October 2015 Issue 1.

(CTPN is still going strong and invites new participants in Miami-Dade and Monroe counties! Learn more at www.fairchildgarden.org/Science-Conservation/Connect-To-Protect-Network)

PINE ROCKLAND CREATURE FEATURE:

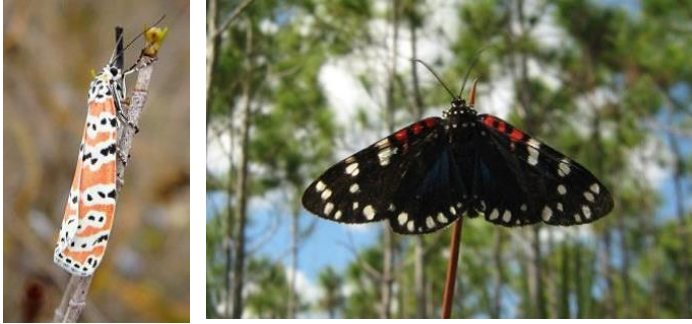
The regal cydosa moth (*Cydosia nobilitella*)

By Jennifer Possley, South Florida Conservation Program Manager, Fairchild Tropical Botanic Garden

Many of us who know and appreciate pine rocklands are familiar with day-flying moths. Unlike nocturnal moths, day-flying moths tend to be much more colorful. Two of our most commonly seen day-flying moths include the bella moth and the faithful beauty. Bella moths—also known as rattlebox moths—host on a variety of *Crotalaria* species (Fabaceae), while faithful

beauties – also known as Uncle Sam moths—may host on a variety of species in the Apocynaceae and Fabaceae families.

Photo of West Indian pinkroot (*Spigelia anthelmia*) by Patricia Howell, from florida.plantatlas.usf.edu



The bella moth (**left**) and faithful beauty (**right**) are probably the two most common day-flying moth in Miami’s pine rocklands (photos by J. Rivera and J. Alonso).

Another, less common day-flying moth is the regal cydosia. Fairchild field biologist Jimmy Lange recently photographed this species in two Miami-Dade EEL preserves. Regal cydosia is a tropical species whose range extends from extreme south Florida, through the Caribbean, and down to Argentina. In South Florida, the moth’s only known host plant is West Indian pinkroot, *Spigelia anthelmia*.

West Indian pinkroot, in the Loganiaceae, is a unique plant. Its native range includes both the Old and New World tropics. The specific epithet, “*anthelmia*”, is a reference to its ethnobotanical use as an anthelmintic (the word is a combination of “anti” plus “helminth,” the Greek word for worm). This little herb is full of compounds that have attracted centuries of folk medicine practitioners, pharmaceutical researchers, and of course moths.

It is likely that the regal cydosia is rare in South Florida because its host plant is not common here. The Institute for Regional Conservation ranks West Indian pinkroot as “Rare” in South Florida. In pine rocklands, this annual herb favors disturbed areas such as roadsides, fences, and abandoned fields-- which are great places to start looking if you would like to see the regal cydosia.

Sources:

<https://bugguide.net/node/view/15740>

<https://regionalconservation.org/>



DADE CHAPTER FLORIDA NATIVE PLANT SOCIETY

President: Kurt Birchenough (kbirc001@fiu.edu, 202-905-3921)
Vice President: Brian Diaz (bdiaz@frostsocietyscience.org, 786-521-0843)
Secretary: Gita Ramsay (gita.ramsay@gmail.com, 786-877-7168)
Treasurer: Susan Walcutt (walcutts@bellsouth.net, 305-297-7757)

At Large: Janeen Feiger, Amy Leonard, Jeanne Rothchild,
Jennifer Stine, Steve Woodmansee, Ian Wogan

Dade Chapter – FNPS Council of Chapters: vacant

Refreshment coordinators: **Volunteers needed**

General chapter information: 305-985-3677

DCFNPS website & social media: <http://dade.fnpschapters.org/>

DCFNPS e-mail: dadefnps@gmail.com

Mail: Dade Chapter FNPS, 6619 S. Dixie Hwy, #181, Miami FL 33143-7919

TILLANDSIA

Editor: Patty Phares (pharespl@gmail.com, 305-255-6404)

Please contact the editor if you would like to join the *Tillandsia* staff!

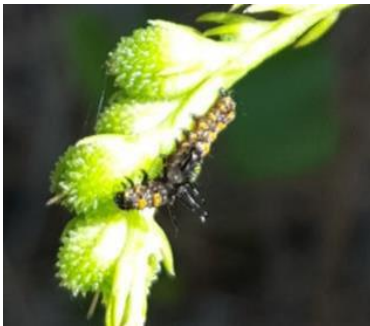
Articles, announcements and news items are invited for *Tillandsia* from Dade and Keys members. **Advertising rates** from \$12 per month.

FLORIDA NATIVE PLANT SOCIETY

FNPS office: info@fnps.org, 321-271-6702

FNPS website, blog, social media: <http://www.fnps.org>

© 2019 Dade Chapter Florida Native Plant Society, Inc.



ABOVE: An adult regal cydosia (**top**) rests on a flowering Panicum at Trinity pineland, and an early instar (**bottom**) feeds on its larval host plant *Spigelia anthelmia* at Rockdale Pineland preserve (photos by Jimmy Lange).

Editor's note: West Indian pinkroot spreads easily in the garden, and you probably will pull some out (very easy). They are often available in the Dade Chapter meeting raffle, or available upon request.