



WANTED
SIGHTINGS
OF:



Claire Goran, 2015

New Guinea Flatworm

Platydemus manokwari

(invasive non-native predatory flatworm)

LOOK FOR THEM! REPORT THEM:

EDDMaps.org

1-888-IVEGOT1

*** One of the World's Top 100 Most Invasive Species**

*** Public health threat – may carry rat lungworm that causes meningitis**

*** Reproduces rapidly**

*** No known enemies**



Pierre Gros, 2014

- * Shiny black/brown body
- * Thin lighter stripe on top midline
- * Pointy "nose" and tail
- * Can grow up to 5 inches

**We need your help
to stop this pest!**



Claire Goran, 2015

Liguus fasciatus



Andrew Derksen, FDACS 2011

New Guinea Flatworm Attacks Snails including Imperiled Native Florida Tree Snails which:

- Feed on algae, fungi, lichen
- Help recycle nutrients;
- Already experiencing habitat loss due to development;
- Over-collected and sold for their shells;
- A few are federally listed /protected species.



Robert Pilla, www.jaxshells.org



Orthalicus reses

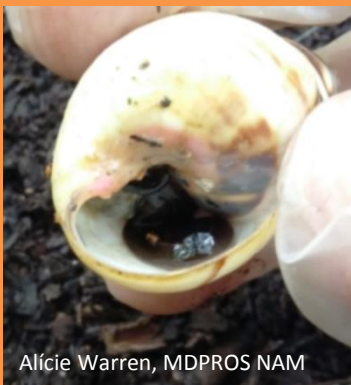
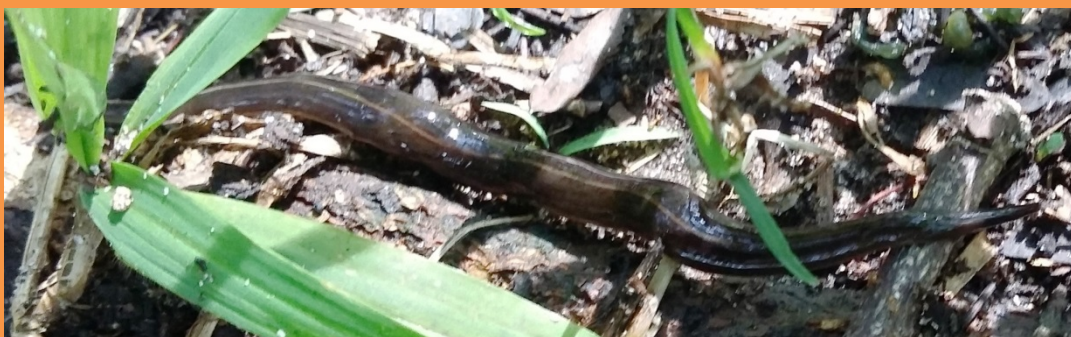
Bill Frank, www.jaxshells.org



Drymaeus multilineatus

Bill Frank, www.jaxshells.org

- **WHERE TO LOOK FOR NEW GUINEA FLATWORM??**
- In moist, dark, vegetated areas;
- Under plants, leaf litter, landscape trimmings;
- In potted plants;
- In soil/detritus or under debris/boards;
- In openings of snail shells (use gloves);
- On ground by air conditioners or near faucets;



Alicie Warren, MDPROS NAM

**Report Possible Sightings
With a Photo and
GPS Coordinates if possible!**



Pierre Gros, 2014